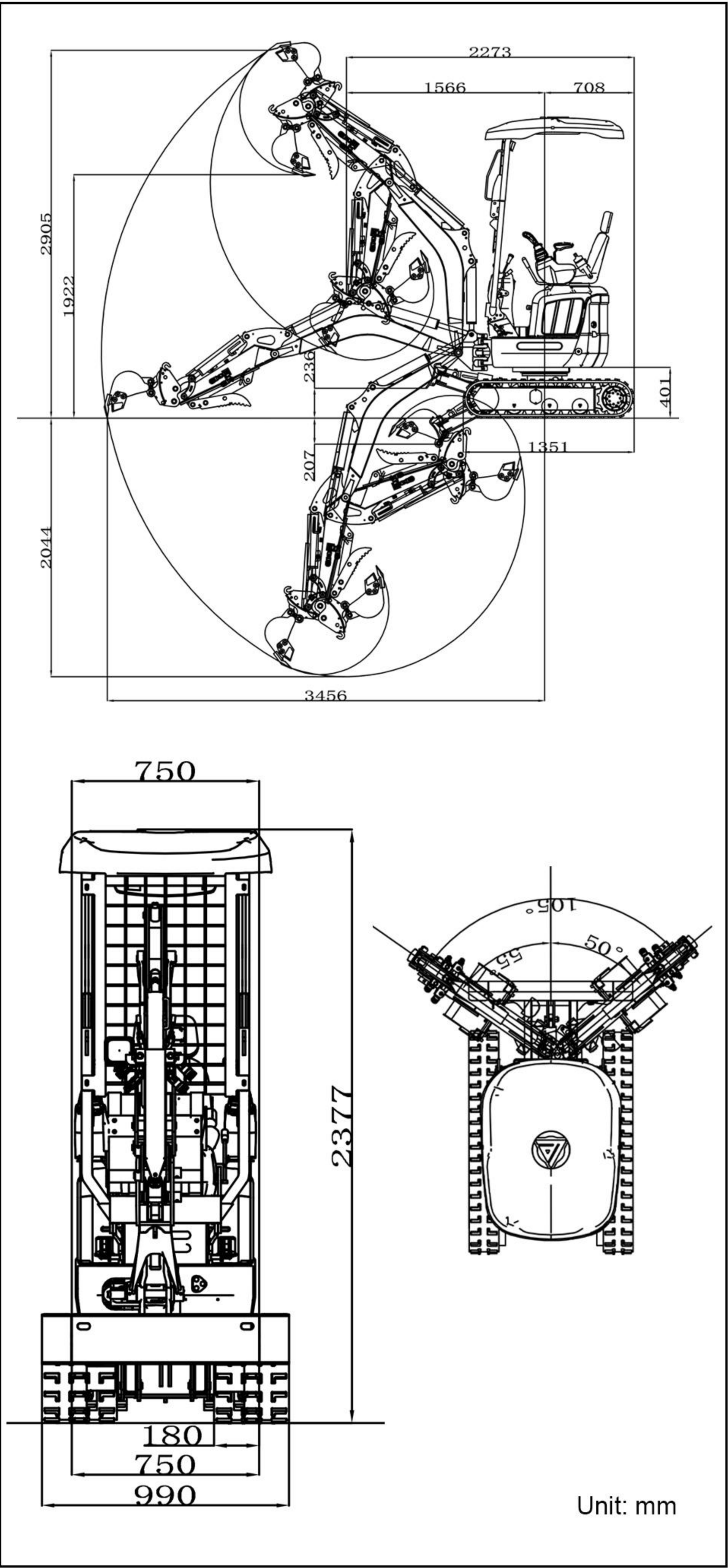


■ SCOPE OF WORK



■ HYDRAULIC SYSTEM

Main pump type/model	Gear pump/305+305+303	Maximum set pressure (MPa)	18MPa
Main pump brand	Tianjin walking	Travel hydraulic motor type	WDM-390 dual-speed travel motor
Main pump maximum flow (L/min)	25L/min	Travel motor brand	Paiyi
Multi-way valve	THD12 multi-way valve	Motor displacement (mL/r)	390mL/r
Multi-way valve brand	Taifeng	Slewing hydraulic motor type	BM2-315
Rated set pressure (Mpa)	17MPa	Displacement	315mL/r

■ SPECIFICATION

MODEL		US	R13 PRO
Basic parameters	Operating weight	2904lb	1320 kg
	Bucket capacity	0.494ft³	0.014 m³
	Travel speed low/high	0-1.1/0-1.74mph	0-1.8/0-2.8 km/h
	Gradeability	30%	30 %
	Ground pressure	3.89psi	26.79 kpa
	Maximum digging force	2203lbf	9.8 kN
	Maximum digging radius	136.1in	3456 mm
	Maximum digging depth	80.5in	2044 mm
	Maximum digging height	114.4in	2905 mm
	Maximum dumping height	75.7in	1922 mm
ENGINE	Maximum deflection angle	105°	105°
	Track extension range	29.5-39in	750-990 mm
	Engine brand	Kubota	Kubota
	Engine model	D722	D722
	Maximum horsepower	13.7hp	13.9ps
	Maximum power	10.2kw	10.2 kw
	Maximum speed	2500rpm	2500 rpm
	Displacement	0.19gal	0.719L
	Number of cylinders	3	3
	Cooling method	Water-cooled	Water-cooled
Body	Engine oil change amount	0.66gal	2.5L
	Fuel form	Diesel	Diesel
	Fuel grade	0/-10	0/-10
	Theoretical fuel consumption	1.1-1.5L/h	1.1-1.5L/h
	Transport length	89.5in	2273mm
	Transport width	33.4in	849mm
	Transport height	93.6in	2377mm
	Counterweight ground clearance	15.8in	402mm
	Bucket width	15.7in	400mm
	Boom length	57.1in	1450mm
	Arm length	34.6in	880mm
	Bulldozer blade width	29.5-39in	750-990mm

- Please read the instruction manual carefully and operate the machine correctly.
- Always wear a seat belt when working. (ROPS specifications only)
- If you are using construction machinery with a mass of less than 3 tons, you must first complete the "Special Training for the Operation of Vehicle-Mounted Construction Machinery" course. If the machine's mass is 3 tons or more, you must complete the "Skills for Operating Vehicle-Mounted Construction Machinery" course.
- To prevent breakdowns and accidents, be sure to inspect your machinery regularly.
- Specific voluntary inspections must be conducted by an inspection company registered with the Minister of Health, Labor, and Welfare or the Director General of the Labor Standards Inspection Bureau.



RYNO
HEAVY DUTY MACHINERY

VENDA - ALUGUER



RYNO.PT



282 357 229
924 961 110





Ultra-compact construction machine with excellent accessibility to narrow spaces and stability

R13PRO



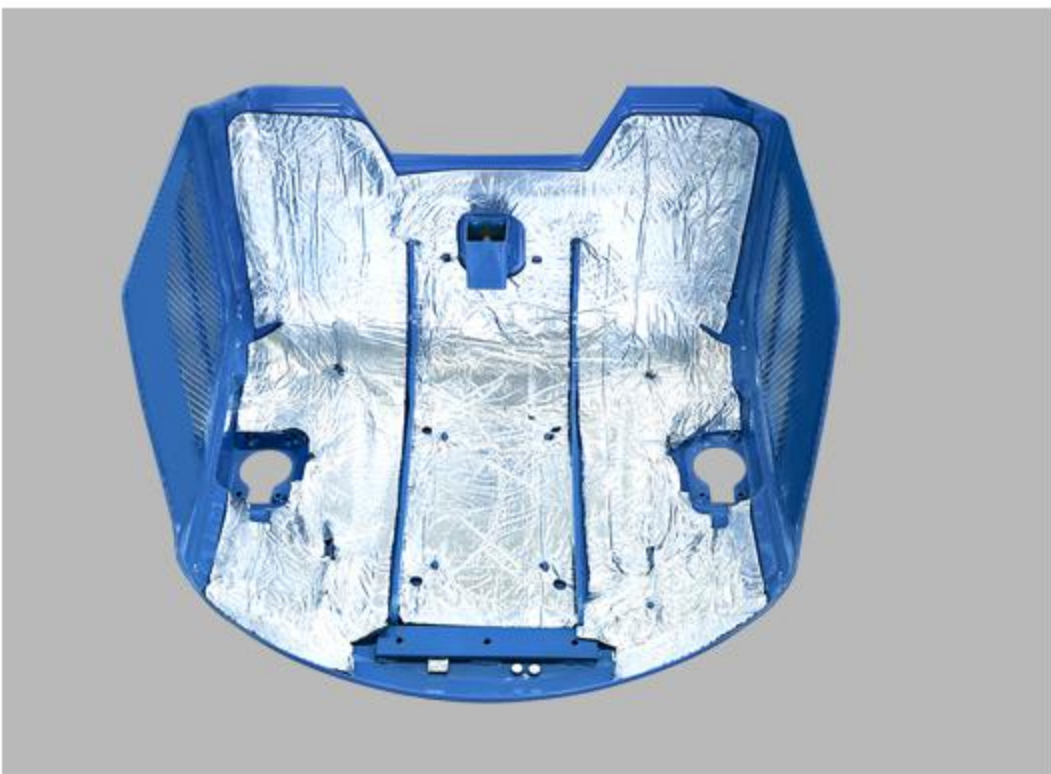
Features and Functions



1 Front-mounted control lever
The front-mounted operating lever ensures ample space for the feet and around the driver's seat.



2 Operation Lock Lever
It is equipped with an engine neutral start function that prevents the engine from starting unless the operation lock lever is in the raised position.



3 Shield posted sound-absorbing cotton
The sound-absorbing cotton is thinner and lighter, effectively insulating the heat and reducing the impact of noise on the driver during operation.



4 Double insurance rocker switch
The hydraulic quick-change rocker switch uses mechanical double protection to prevent accidental touch during operation, which is safer.



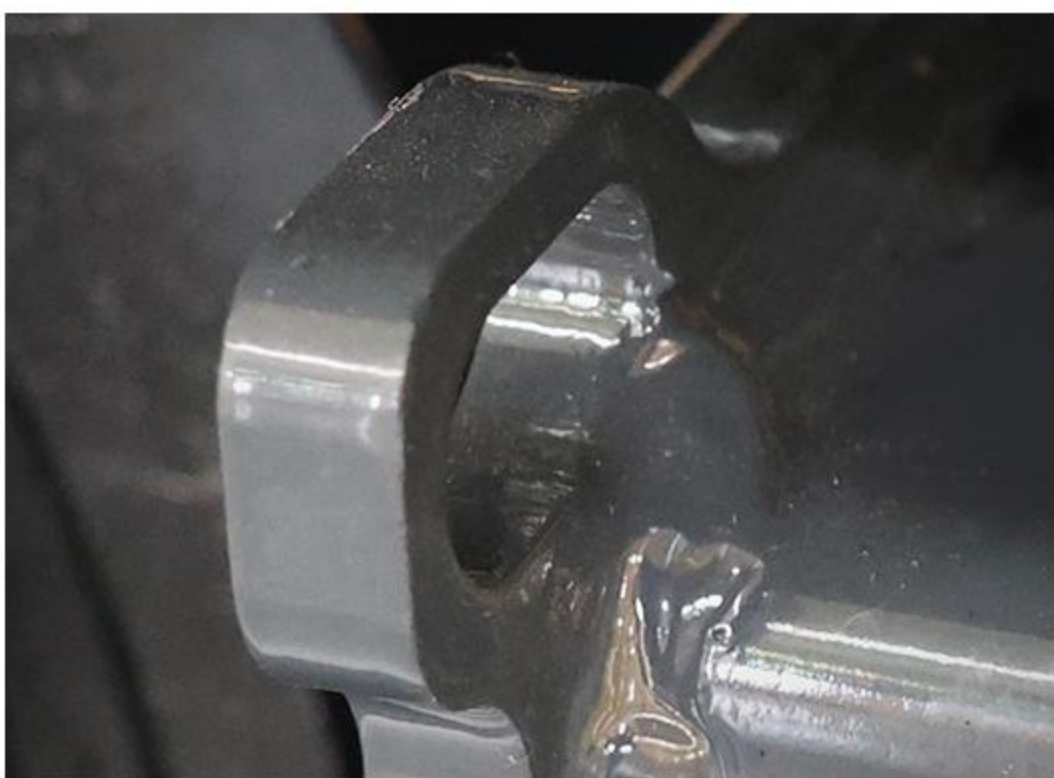
5 Fully openable bonnet
The fully-opening bonnet opens wide to the rear, making it easy to carry out daily inspections and part replacements around the engine and fuel system.



6 Towing hook
A hook is equipped on the rear of the frame.



7 Air Filter
Prevent dust and impurities from entering the engine's air intake system, thus extending the engine's service life.



8 Added lower plate lifting port
When the excavator needs to transport something stuck in mud, landslide or other emergency situations, the lifting port can be connected to a wire rope or hook to cooperate with the crane for safe lifting.



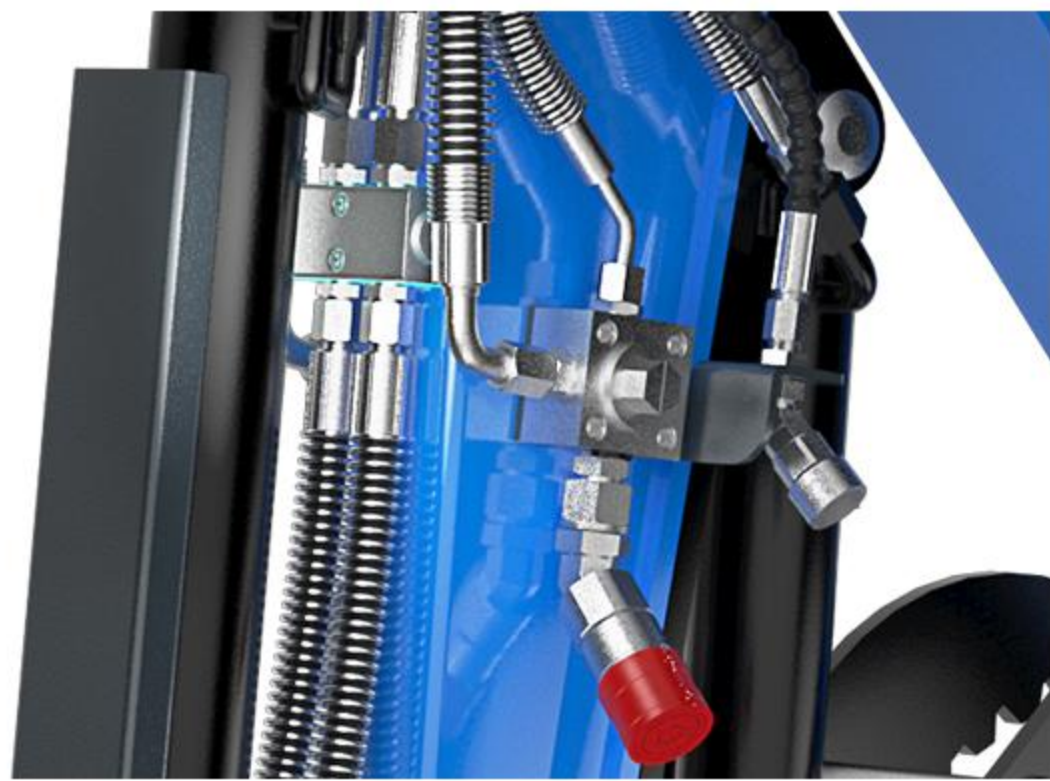
9 Multi-function button
The crawler extension and dozer blade switching functions can be realized through simple button operation, as well as the quick change of attachments.



10 Extended bulldozer blade
The width of the dozer blade can be easily extended by removing and attaching the pin.



11 Split Dozer Hose
In the event of unexpected damage, the hose can be easily replaced.



12 Four-way oil pipe
Can be equipped with various accessories.

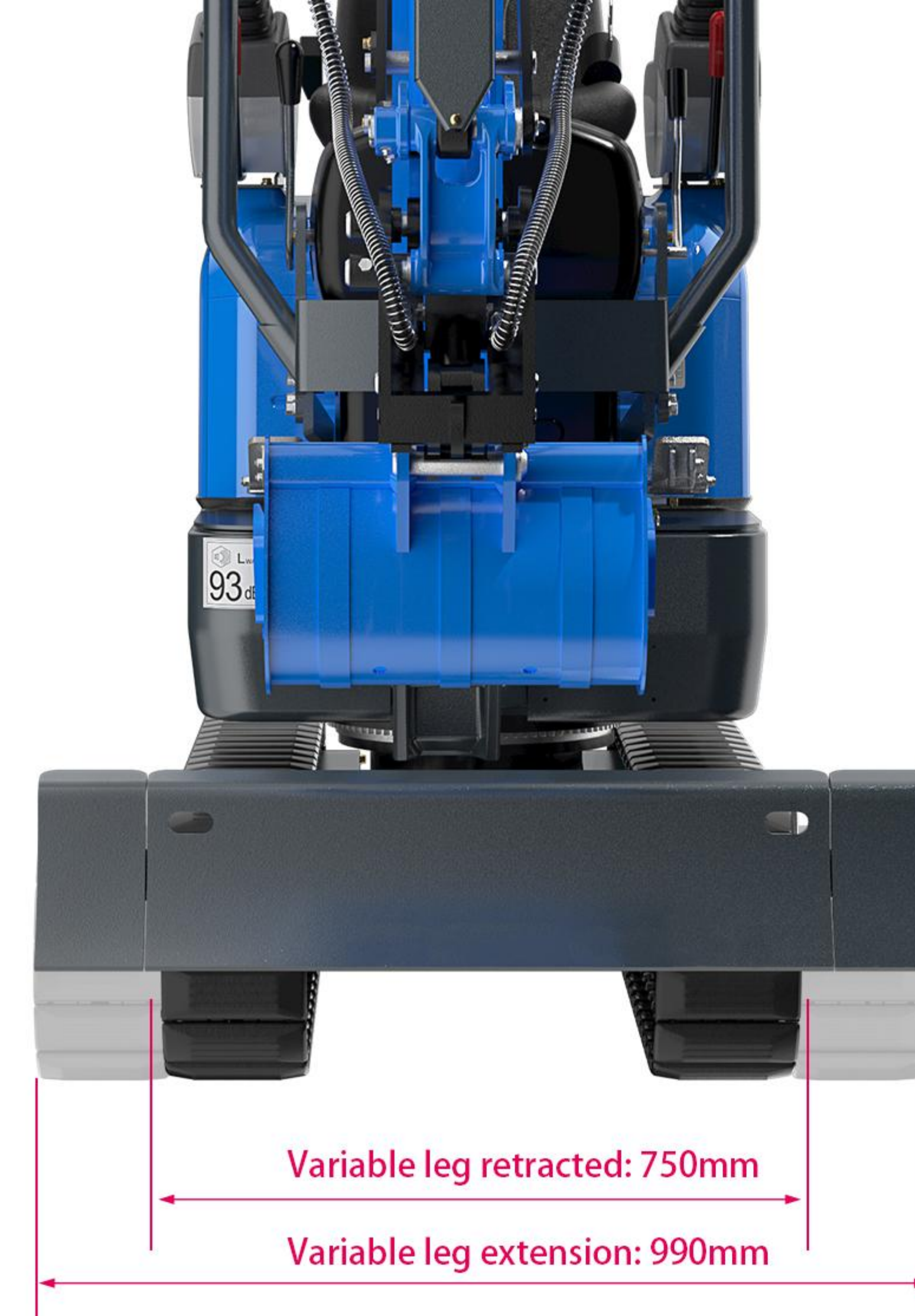


13 Rear boom cylinder
You can scoop up large stones and concrete pieces with the bucket, load them onto a dump truck, or work with a mounted breaker without worrying about damaging the boom cylinder.





High performance of **R13 PRO**
**ULTIMATE ACCESSIBILITY
 TO NARROW SPACES**



Variable leg retracted: 750mm

Variable leg extension: 990mm

Variable leg specifications

It uses variable leg crawlers that can be easily extended and retracted by operating a lever.
 By contracting the crawler width, it can easily pass through narrow passages and between gates, and when expanded it is highly stable and can handle a variety of tasks.
 The blade width can be easily extended by attaching and removing the pin.

※ Please extend the crawler when working.



Rear small swing machine

The rear radius is 506mm, making it easy to work in tight spaces or close to walls.
 In addition, the rear end overhang is only 60mm when turning, making it compact and allowing you to turn in tight spaces without hesitation.



Rear turning radius 506mm

Overhang width
 60mm



Can be excavated in narrow spaces

By swinging the work machine, excavation in narrow spaces and near walls is possible.

Boom swing angle (right): 50°
 Boom swing angle (left): 55°



High performance of **R13 PRO**

Reliable excavation performance



Wide working range

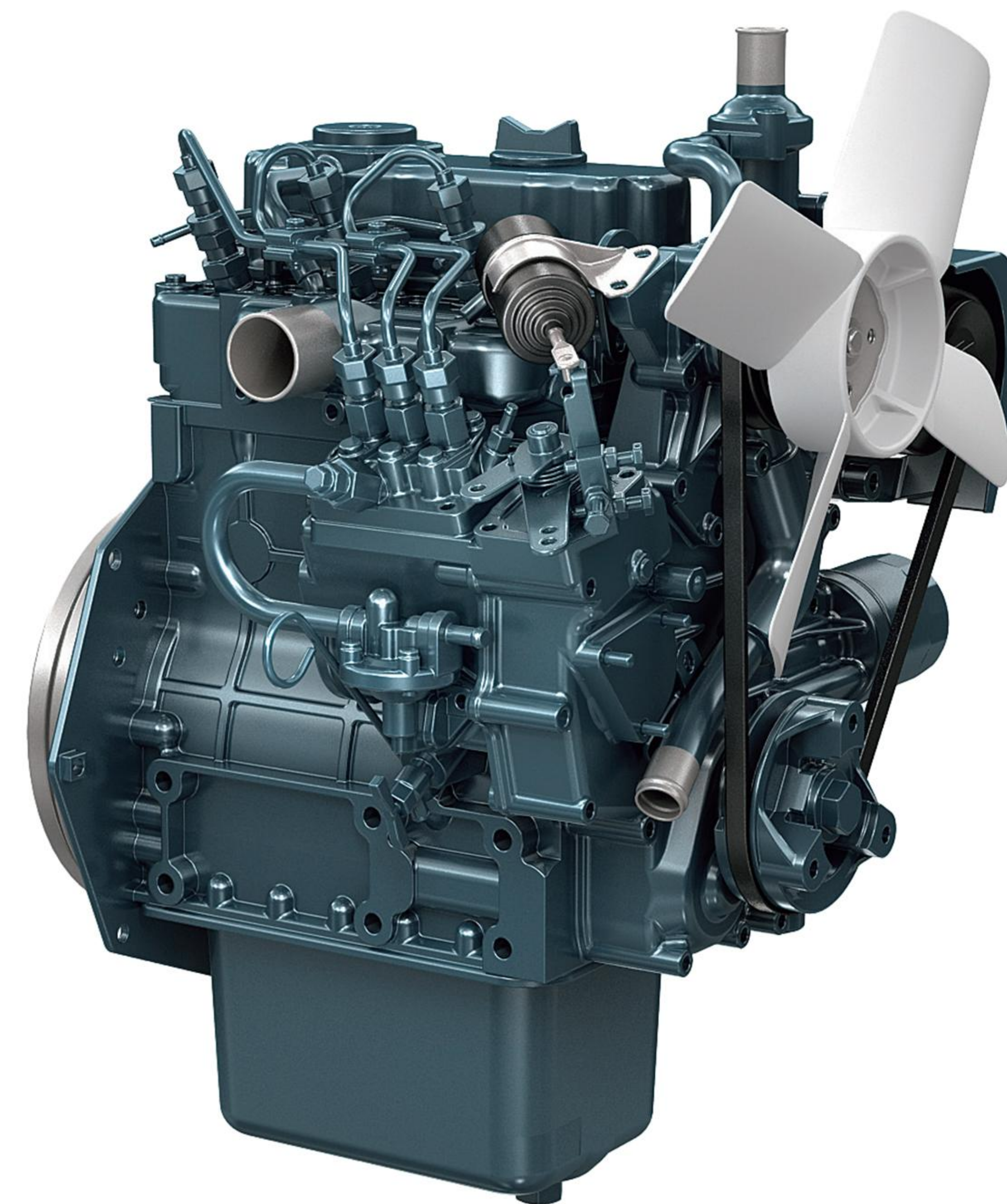
Despite its compact size (1 ton class), it has powerful excavation performance and a wide working range. It makes it easy to load soil onto trucks and excavate.

Maximum digging radius

3456MM

Maximum excavator depth

1843MM



Kubota 3 cylinder engine

Equipped with a high-torque, low-vibration Kubota 3-cylinder engine, it provides powerful digging power.

Engine type: D722
Rated power/speed: 10.2kw (13.7hp)/2500rpm



Pilot button handles on both sides

Each of the left and right handles has two buttons for controlling actions and other functions. The buttons protrude directly above the handles. They are small and convenient to operate, and you won't get tired easily even if you operate them for a long time.



Environmental friendly

The ultra-low-pitched engine reduces noise problems during urban construction and at night. Environmentally friendly, in compliance with Euro 5 and EPA 4 emission standards

Safety and security design



Full opening hood and hood handle

The fully opening hood opens wide at the rear. This allows for easy daily inspection and replacement of parts around the engine and fuel system. A hood handle has also been added to make opening and closing the hood easier.

Safety net and plastic roof

High-strength steel wire mesh can withstand 200kg impact force to prevent falling damage from gravel, tools, etc.



Tow hook

The frame is equipped with a hook on the back

Rear-mounted boom cylinder

You can pick up large rocks or chunks of concrete with a bucket, load them onto a dump truck, or work with an onboard breaker without worrying about damaging the boom cylinder.



Operating lock lever

It is equipped with an engine neutral start feature that prevents the engine from starting unless the operating lock lever is in the raised position.



LED light

It comes standard with an LED light that generates little heat and is vibration resistant.

ROPS specification



Front ROPS bar

This protects the operator from the risk of falling. It can also be folded to accommodate different heights for transport, etc.

※ROPS (Rollover Protective Structure)
This stands for "rollover occupant protective structure" and refers to a structure that protects the operator wearing a seat belt from danger when the machine rolls over.



Sliding seat and retractable seat belt

The sliding seat can be adjusted in four stages to suit the operator's body shape, allowing them to work in a comfortable position.



Instruction manual and toolbox

A box for storing instruction manuals and tools is provided under the seat.

※ When using a ROPS system, be sure to wear a seat belt while working.

WE ARE RIPPA

Shandong Rippa Machinery Group Co., Ltd. is located in the Sixth Industrial Park, Jining high tech Zone, Shandong Province. It is a state-level high-tech enterprise with the right to import and export;

The company's staff are vigorous and enterprising, and constantly create the legend and glory of the Rippa!



Shandong Rippa Machinery Group Co., Ltd.

Add: No. 39, Guang'an Road, Liuxing Sub-district Office, High-tech Zone, Jining City, Shandong Province



www.rippa.com

Some specifications are based on engineering measurements and may deviate from actual conditions. Specifications are for comparison purposes only and are subject to change without notice. Specifications of individual Rippa equipment will vary based on normal variations in design, manufacturing, operating conditions and other factors. Some pictures of Rippa equipment are not limited to standard packages.